

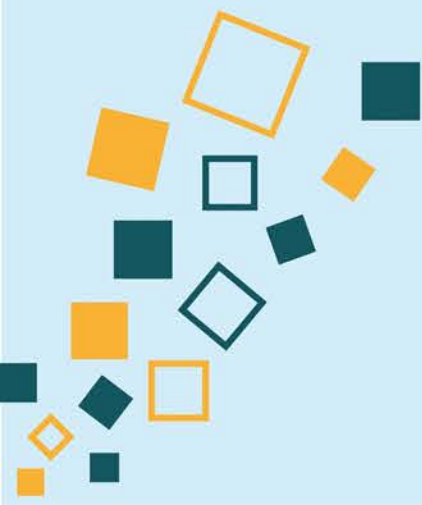
Theme 2 / Social justice dimensions of low-carbon transitions and adaptation to a warming world

Thème 2 / Les dimensions sociales et d'équité de la transitions vers une société sobre en carbone et adapté à un monde plus chaud



STRATEGIC DIALOGUE ON CLIMATE CHANGE POLICY RESEARCH IN CANADA

RECHERCHE EN POLITIQUES CLIMATIQUES AU CANADA : UN ATELIER-DIALOGUE STRATÉGIQUE



IVEY foundation





Ground Rules

- Chatham House rule
- Schedule will be enforced
- Meeting etiquette: raise hand, mute mic, short intervention
- Don't forget online discussions/contributions
- Useful for Territory Acknowledgement : <http://native-land.ca>



Consignes

- Règles de *Chatham House*
- L'horaire sera respecté avec précision
- Étiquette de la rencontre: levez votre main (virtuellement), coupez votre micro et faites des interventions courtes
- N'oubliez pas les discussions/contributions en ligne
- Utile pour reconnaissance des territoires: <http://native-land.ca>



Useful for Territory
Acknowledgement :
<http://native-land.ca>

Utile pour reconnaissance
des territoires:
<http://native-land.ca>



Territories Languages Treaties

Search your address, or toggle switches above to add shapes. Click around! [Think critically about this map](#)

🔍 Montreal, Quebec, Canada ✕

Territories ▾

Languages ▾

Treaties ▾

You are on the land of:
[St. Lawrence Iroquoians](#) 📍
[Haudenosaunee \(Longhouse Confederacy\)](#) 📍
[Mohawk](#) 📍

mapbox

Export Map



Workshop Objectives



- Foster **constructive dialogue** on critical climate choices facing Canada
- Identify **research priorities**, opportunities for **collaboration**, and **knowledge gaps** in Canada's climate change research and policy landscape
- Help **inform the research agenda** for the Canadian Institute for Climate Choices
- Identify **opportunities for complementary research** across organizations
- **Strengthen relationships** among top climate policy researchers and thinkers across Canada



Framing document's questions

1. What are the key priorities for climate policy and research in trying to identify vulnerabilities to the impacts of climate change and related policies?
2. In linking adaptation, mitigation and clean growth measures to social justice, what are ways to address real or perceived risks?
3. How can equity dimensions be better integrated into climate policy choices, to ensure that sufficient space is given to various perspectives, for instance youth, BIPOC (Black, Indigenous, People of Colour), French-speaking, etc.?
4. In contrast to negative impacts, are there collateral social benefits that come from the implementation of climate policies?
5. How can policy be designed to address the challenge of single-industry resource towns, where these industries are affected by climate objectives?



Research objectives under Theme 2



- Improving **how** the research is conducted
- Research **to support policymaking that fosters well-being**
- Research **to help generate engagement/support** by citizens and various groups **for climate action**



How the research is conducted

- **Working with all groups** (including marginalized) to identify issues that concern / affect them
 - Identifying the right conditions to foster the trust and collaboration required
 - Research on the **most effective inclusive processes** (codesign processes)
 - Review of practices in other jurisdictions (Indigenous groups in Canada, New Zealand, India, etc.)
 - Role for boundary organizations in helping to communicate results
- **Considering different types of knowledge** (science, practice, traditional)
- **Encouraging interdisciplinary approaches**
- **Prioritizing cross-cutting issues**
- **Framing the issue differently**
 - Solution-oriented
 - Setting GHG reductions and adaptation in broader context (such as SDG)
 - Climate policy vs decarbonization and/or resilience
 - Forward looking research – defining future pathways based on a vision for a resilient Canada



Research to support policy-making

- **Risk fairness:**
 - emitters vs groups/areas that are impacted by climate risks
 - provinces and even industries crowding out remaining carbon budget (requires accelerating decarbonization of other regions)
- All policy-making should consider fight against climate change:
 - What are the **distributional impacts of a given policy when considering GHG reductions or adaptation.**
 - Documenting co-benefits
 - **Assess different pathways** (futures) to identify potential distributional impacts and actions to avoid them.
- Policymaking should **include voices of marginalized groups:**
 - **What is at risk and why?**
 - Begin with networks that represent these groups to identify main issues and identify procedural mechanisms that ensure participation (how do they want to be engaged).
 - Affected groups are not just vulnerable – we must also **learn resilience from them**
- Jurisdictional responsibilities and governance - given that risks vary across space, time and groups:
 - At which spatial scale can different policies be developed or applied?
 - How can we apply asymmetrical policies in a way that doesn't generate inequity?
 - What factors support multi-level governance?
 - What kind of governance structures promote and foster collaboration, coordination and coherence?
 - How to develop and apply objective oriented policies?
 - How do climate change effects and associated climate policies impact section 35 of the constitution?
- What kind of **monitoring and evaluation** frameworks **help us learn** from the policies in place and help improve and adjust in the right way (for example, funding programs that require climate change associated criteria)?



Research to help generate engagement



- Focusing policymaking on **issues that are more compelling to people** (health, food, housing, etc.) that help in the fight against climate change (co-benefits).
 - Effects on wages, human capital, labour, etc. are all issues that need to be addressed.
- Need to begin with space to share different perspectives
 - Creating safe and neutral spaces where dialogue on conflicting positions is possible
 - Taking the time to understand the sources of climate change denial (and why it is gaining importance)
- What are the **social justice consequences due to inaction?**
 - What are the economic, social and environmental costs of inaction?
- What are the main drivers of **behavioral change and the factors that sustain** these changes over time (for example, lessons to learn from the COVID-19 pandemic)?
- Legal paradigms and imperatives for respecting self-governance.
- Storytelling approaches to engage various groups
 - The **stories we tell shape the world** – finding creative ways to communicate (multi-directional)
 - Find ways to provide a voice (film, photography, art, ...)
 - Applied spatial planning (participatory map-making, etc.)



Objectives for this discussion



- Identifying key **research questions**
- **Identifying short-term actions**
 - build on existing research results
 - build on on-going research
 - research questions for which multidisciplinary teams are already in place
 - ...
- **Identify links to natural resources**



Discussion



- Knowledge gaps?
- Policy shortcomings?
- Research to prioritize?



- Short-term actions?
 - Inventory of recommendations stemming from existing expert reports and synthesizing to identify common and complementary actions