



Integrated approaches to addressing climate priorities: *Lessons from adaptation planning*

Anne Hammill
Senior Director, Resilience
October 8, 2020

Embedding adaptation in how we envision & plan our futures, invest our resources, and track our progress

Integrated (adj) – an approach that implicates & cuts across

- **economic sectors**
- **jurisdictions**
- **issues**

Integration (noun) – the process of combing ... for a share objective





The National Adaptation Plan (NAP) process

- Analyzing current & future climate change
- Assessing vulnerability to its impact
- Identifying and prioritizing options
- Implementing
- Tracking progress

Support in establishing and undertaking this process

But also making this process standard, ongoing practice – putting in place the systems and capacities



**NAP
Global
Network**

**Support national adaptation
planning and action**



**Technical support
to countries**



**South-South peer
learning & exchange**



**Knowledge
production &
communications**



What can we usefully share that might be of interest or relevant to the Canadian context?

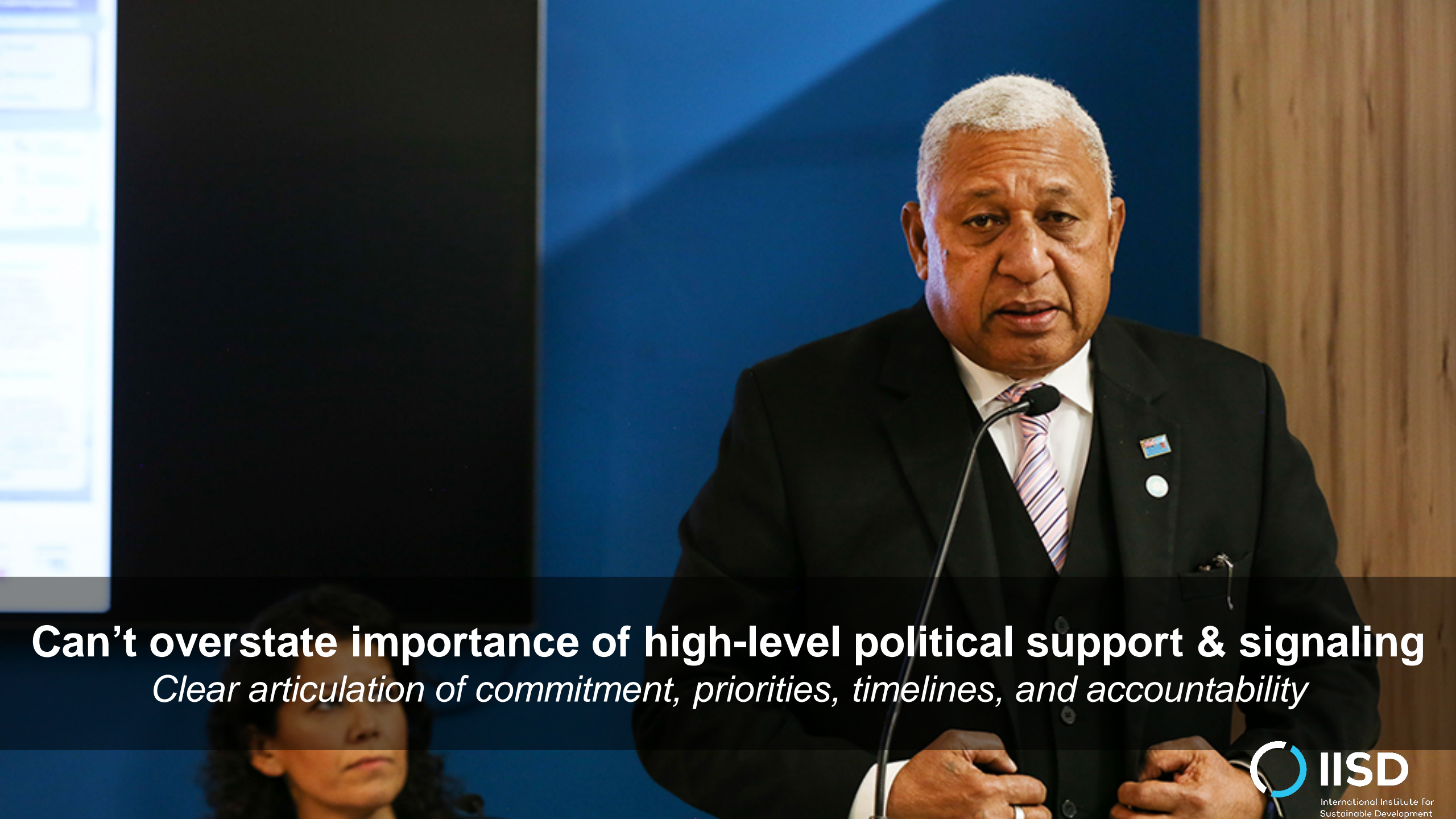
Challenges are universal – 'enabling factors'

- Data, information, knowledge
- Institutional arrangements
- Capacities
- Finance

Also...

- Fundamental understandings of adaptation
- Always looking for the analogs to mitigation -- \$, tech
- Implementation gap
- Measuring success





Can't overstate importance of high-level political support & signaling
Clear articulation of commitment, priorities, timelines, and accountability



Tension between sectoral approaches and mainstreaming
Need to shine a light on priorities before folding them into everything else



Integrated approaches / integration – messy, circuitous

*Accommodating changing frameworks, different timelines, competing priorities;
often about ‘grabbing moments’; why leadership is key*



Integration is as relational as it is technical

Engagement strategies; creating the spaces for establishing & building relationships



THINK BEFORE WE ACT

Communications

Communications strategies within government; media training on adaptation storytelling; embedding communications experts; artists



Gender equality and social inclusion
At the policy level; bedrock of analysis and process

Map

Satellite



Tracking progress

Much more than indicators – setting up a system; data protocols; blending knowledges and technologies; learning; reporting



Integrated approaches can really pay off during times of crisis
COVID-19: Looking

Some common big questions

- Public engagement
- Economics
- Vertical integration
- Private sector engagement (small businesses)

Where do we see some interesting opportunities for South-North learning?

- Tracking progress / monitoring & evaluation
- Gender equality and social inclusion



Thank you

Anne Hammill
ahammill@iisd.ca



NAP
Global
Network

www.napglobalnetwork.org