

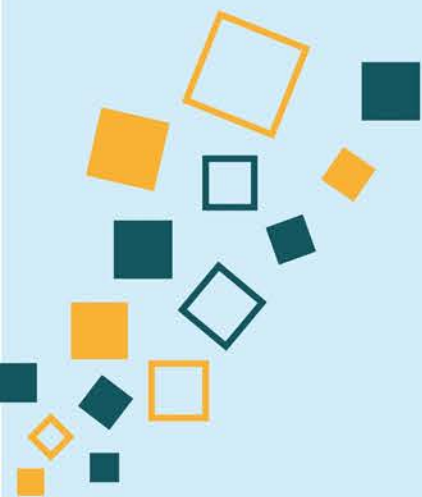
Theme 2 / Social and equity dimensions of low-carbon transitions and adaptation to a warming world

Thème 2 / Les dimensions sociales et d'équité de la transitions vers une société sobre en carbone et adapté à un monde plus chaud



STRATEGIC DIALOGUE ON CLIMATE CHANGE POLICY RESEARCH IN CANADA

RECHERCHE EN POLITIQUES CLIMATIQUES AU CANADA : UN ATELIER-DIALOGUE STRATÉGIQUE



IVEY foundation





## Ground Rules

- Chatham House rule
- Schedule will be enforced
- Meeting etiquette: raise hand, mute mic, short intervention
- Don't forget online discussions/contributions
- Useful for Territory Acknowledgement : <http://native-land.ca>



## Consignes

- Règles de *Chatham House*
- L'horaire sera respecté avec précision
- Étiquette de la rencontre: levez votre main (virtuellement), coupez votre micro et faites des interventions courtes
- N'oubliez pas les discussions/contributions en ligne
- Utile pour reconnaissance des territoires: <http://native-land.ca>



Useful for Territory  
Acknowledgement :  
<http://native-land.ca>

Utile pour reconnaissance  
des territoires:  
<http://native-land.ca>



Territories  Languages  Treaties

Search your address, or toggle switches above to add shapes. Click around! [Think critically about this map](#)

Q Montreal, Quebec, Canada X

Territories ▾

Languages ▾

Treaties ▾

You are on the land of:  
St. Lawrence Iroquoians [↗](#)  
Haudenosaunee (Longhouse Confederacy) [↗](#)  
Mohawk [↗](#)

Export Map



# Workshop Objectives



- Foster **constructive dialogue** on critical climate choices facing Canada
- Identify **research priorities**, opportunities for **collaboration**, and **knowledge gaps** in Canada's climate change research and policy landscape
- Help **inform the research agenda** for the Canadian Institute for Climate Choices
- Identify **opportunities for complementary research** across organizations
- **Strengthen relationships** among top climate policy researchers and thinkers across Canada



# Framing document's questions

1. What are the key priorities for climate policy and research in trying to identify vulnerabilities to the impacts of climate change and related policies?
2. In linking adaptation, mitigation and clean growth measures to social justice, what are ways to address real or perceived risks?
3. How can equity dimensions be better integrated into climate policy choices, to ensure that sufficient space is given to various perspectives, for instance youth, BIPOC (Black, Indigenous, People of Colour), French-speaking, etc.?
4. In contrast to negative impacts, are there collateral social benefits that come from the implementation of climate policies?
5. How can policy be designed to address the challenge of single-industry resource towns, where these industries are affected by climate objectives?



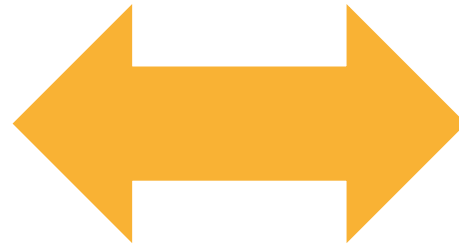
# Discussion



- Knowledge gaps?

- Policy shortcomings?

- Research to prioritize?



- Short-term actions?